



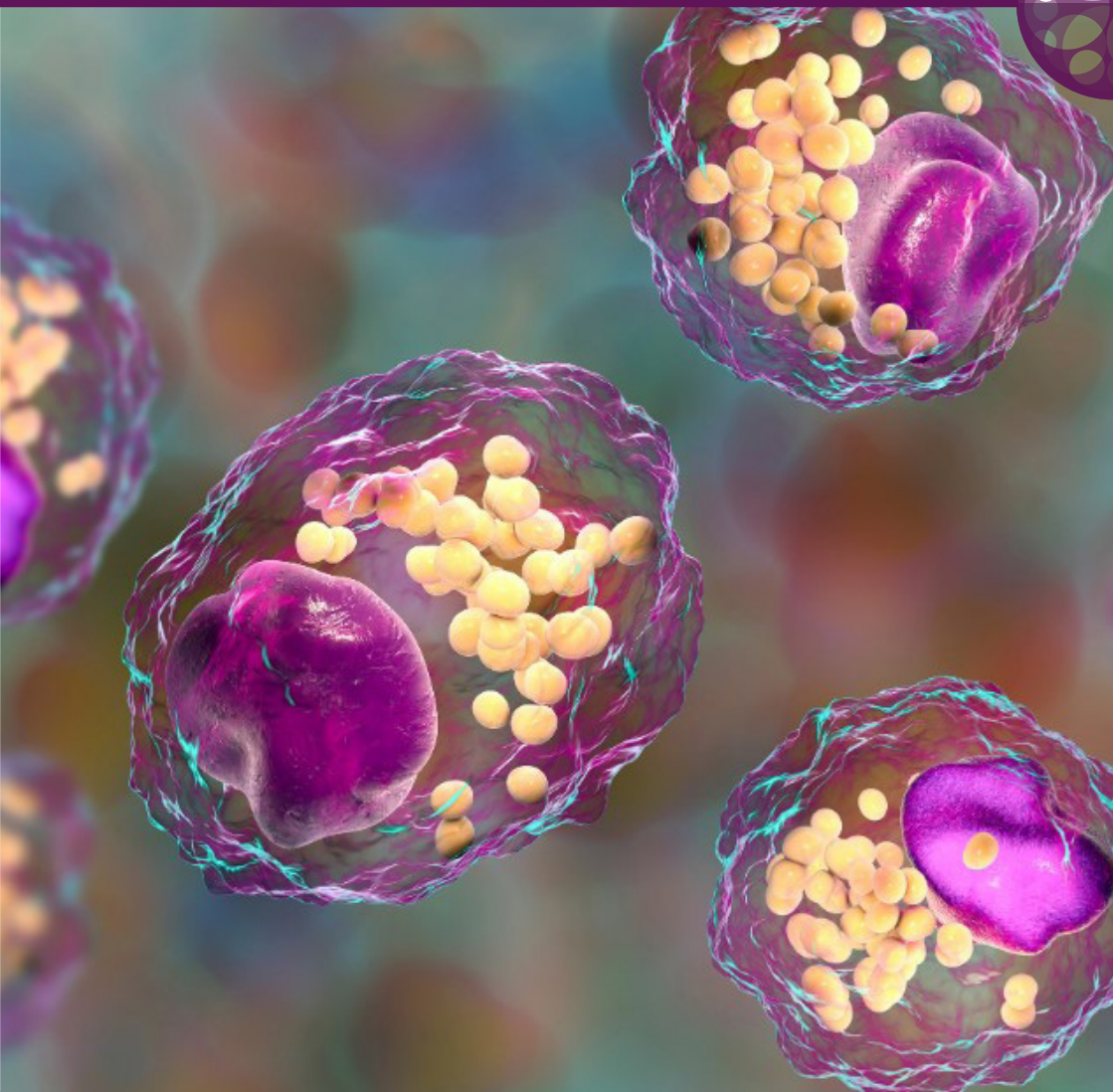
BIOCHEMICAL
SOCIETY



CLINICAL SCIENCE

LINKING BASIC SCIENCE TO
DISEASE MECHANISMS

portlandpress.com/clinsci



Translating molecular bioscience and experimental research into medical insights, *Clinical Science* offers comprehensive studies using a multi-disciplinary approach including models of human disease and clinical perspectives to advance human health. *Clinical Science* covers the broad spectrum of biomedical specialities including, the cardiovascular system and vascular biology, genomic medicine, inflammation, nephrology, hepatology, cancer biology and the respiratory system.

Editor-in-Chief

Michael J. Ryan (University of South Carolina School of Medicine Columbia, USA)

Associate Editors

Philip Calder (University of Southampton, UK)

Mark Cooper (Monash University, Australia)

Christian Delles (University of Glasgow, UK)

Satoru Eguchi (Lewis Katz School of Medicine at Temple University, USA)

Rayna J. Gonzales (The University of Arizona College of Medicine, USA)

Mansoor Husain (MaRS Centre, Canada)

Karin Jandeleit-Dahm (Monash University, Australia)

Jonathan Lamb (Imperial College, UK)

Isabelle Leclercq (Universite catholique de Louvain, Belgium)

Maria Luisa S. Sequeira-Lopez (University of Virginia, USA)

Meena Madhur (Vanderbilt University, USA)







Ilja Striz (Institute of Clinical and Experimental Medicine, Czech Republic)

Jennifer Sullivan (Augusta University, USA)

Ross Vlahos (RMIT University, Australia)

Zhiming Zhu (Chongqing Institute of Hypertension, China)

Articles

-  Skin-specific mechanisms of body fluid regulation in hypertension
-  Translating atherosclerosis research from bench to bedside: navigating the barriers for effective preclinical drug discovery
-  Biological tuners to reshape the bile acid pool for therapeutic purposes in non-alcoholic fatty liver disease
-  Structural functionality of skeletal muscle mitochondria and its correlation with metabolic diseases
-  Cardiomyocyte BRAF is a key signalling intermediate in cardiac hypertrophy in mice
-  A novel technique using chronic infusion of small extracellular vesicles from gestational diabetes mellitus causes glucose intolerance in pregnant mice

Special collections

-  Cardiovascular-oncology
-  Reproductive physiology and disease
-  New discoveries in bile acids, gut microbiota and host interactions in health and disease
-  Biology of ageing



OPEN ACCESS
PUBLISHING IS AVAILABLE



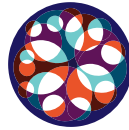
EXPERT
PEER REVIEW



TOTAL ARTICLE VIEWS
IN 2022
599K+



BEST PRACTICE
ADHERES TO COPE AND
ICMJE GUIDELINES



INDEPENDENT
ALL OF OUR
PROFITS SUPPORT
THE BIOCHEMICAL SOCIETY



INTERNATIONAL
EDITORIAL BOARD



FREE COLOUR FIGURES
ALSO NO SUBMISSION
OR PAGE CHARGES



IMPACT FACTOR
6*



MEDIAN ACCEPTANCE
TO PUBLICATION
20 DAYS



INDEXED IN
GOOGLE SCHOLAR,
PUBMED AND
WEB OF SCIENCE



RESEARCHER NETWORK
PARTNERED WITH ORCID
AND PUBLONS



POLICY
WE ACTIVELY CONTRIBUTE TO
THE EVOLVING LANDSCAPE
OF ACADEMIC PUBLISHING

W portlandpress.com/clinsci
E editorial@portlandpress.com

SUBMIT
clinsci.msubmit.net

SIGN UP TO ALERTS
VIA OUR HOMEPAGE



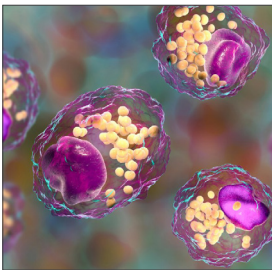
The Biochemical Society works in partnership with researchers, institutions, and funders to share knowledge and advance the molecular biosciences. Disseminating world-leading research and reviews through our publishing arm, Portland Press, we return all related profits to the life science community in support of our charitable activities. With more than 5.4 million worldwide article views in 2022, our journals cover the breadth of the molecular biosciences and support the transition to a more open scholarly landscape.

W portlandpress.com  editorial@portlandpress.com  [@PPPublishing](https://twitter.com/PPPublishing)

Open scholarship

As an independent society publisher, we're committed to an open research landscape that supports global scientific advancement. As well as pursuing a sustainable transition to full open access publishing, we've implemented policies that promote open data and improved transparency on author contributions, and have integrated the unrestricted availability of article citations, references, and abstracts.

W portlandpress.com/openscholarship



Cover Image

This cover image depicts a 3D illustration of cells containing lipid droplets.

doi.org/10.1042/CS20200085

Image used under license from Kateryna Kon/Shutterstock.com